

PROGNOSYS FOR SOLITAX sc

Eliminate last-minute maintenance emergencies.

PROGNOSYS is a predictive diagnostic system that allows you to be proactive in your maintenance, by alerting you to upcoming instrument issues. Know with confidence whether changes in your measurements are due to changes in your instrument or your water.



Measurement Indicator

The measurement indicator monitors the instrument's components and uses that information to alert the user to upcoming instrument needs before measurements become questionable.



Service Indicator

The service indicator tracks the number of days until the instrument will require maintenance or service.



MAINTENANCE REQUIRED



Measurement Indicator

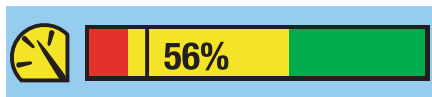
- LED Failure: Error for measurement accuracy greater than 10 %
- Factory calibration lost
- Wiper blade is stuck or blocking window
- Any instrument error



Service Indicator

- 1 day or less remaining until the next recommended maintenance task
- Water in sensor
- Gasket replacement required

MAINTENANCE PENDING



Measurement Indicator

- LED intensity is lower than expected
- Wiper blade may need to be replaced
- Increased moisture detected in sensor
- Any instrument warning



Service Indicator

- 2–14 days remaining until the next maintenance task (user adjustable)
- Wiper motor approaching end of lifecycle
- Gasket replacement is required soon

MAINTENANCE PERFORMANCE



Measurement Indicator

- No calibration errors
- Wiper blade in good condition
- No wiper blade errors
- No moisture detected in sensor



Service Indicator

- 7–14 days remaining until the next maintenance task (user adjustable)
- Wiper motor in good condition
- Gasket in good condition

Many of the parameters and tasks considered for the maintenance indicator will also be displayed through the service indicator if the related instrument components require maintenance soon.